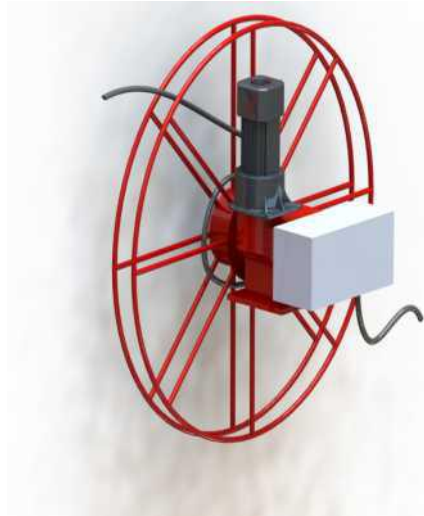


Superreel® - Industrial Reel

EESC1800S SERIES



FEATURES

- To handle live electric cable/cord.
- Automation, Powered by electric motor. Large-diameter, Large capacity, Auto-distribution.
- Silver alloy slip ring.
- Durable abrasion and corrosion resistant baked-on power coat finish.
- Rugged construction: Steel drum and all bolted construction. Vibration-proof self-locking fasteners.
- Low maintenance: Dual main bearings never need lubrication.
- Compact for critical space requirements.
- Shipped completely assembled, ready to install.

1

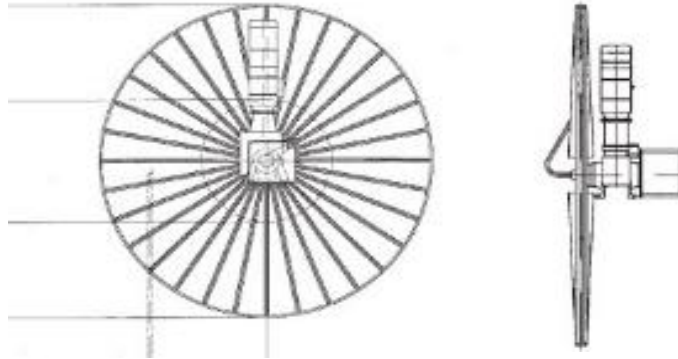


WWW.SUPERREEL.COM

Email: sales@superreel.com

Superreel® - Industrial Reel

DIMENSIONS



P/N	Port&core number	HOSE-ID. or CABLE-square	Pressure or I _{max}	Working length	Reel inlet	Cable outlet	A	B	C	D	E	F	G	H	I	J	K
EESC1800S0411091100	4	16 ²	91A	100m	Bare wire	Bare wire	1800	500	1800	860	1800	300	490	250	445	4	18
							Dimensions are in millimeters										

